



# 62AT-70/4

## 6 with Coaxial Tweeter Landscape Satellite

All Terrain Landscape Series

### Key Features:

- 6 inch high excursion woofer for rich powerful midrange
- 1 inch coaxial tweeter for clear crisp highs and a smooth full range response
- Outdoor and marine capable providing high durability to environmental conditions



### Applications:

- Outdoor audio
- Landscape distributed audio systems

The AT Series engineered landscape speakers feature a coaxially mounted 1" aluminum dome tweeter design over a proprietary high-excursion 6" woofer.

Our All-Terrain speakers come with a built in crossover network and 100 Watt low-loss, toroidal 70 Volt transformers, allowing these outdoor speakers to play at higher volumes while still maintaining a smooth frequency response of 70-20kHz.

The woofer features an aluminum cone and santoprene surround to withstand harsh outdoor environments. The 62AT is constructed of aircraft aluminum and includes an aluminum perforated grille to provide years of trouble free use. Also available in a 4 Ohm version, model# 62AT4.

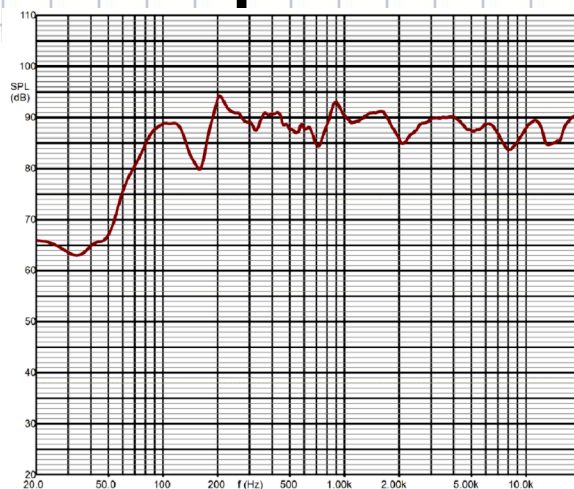
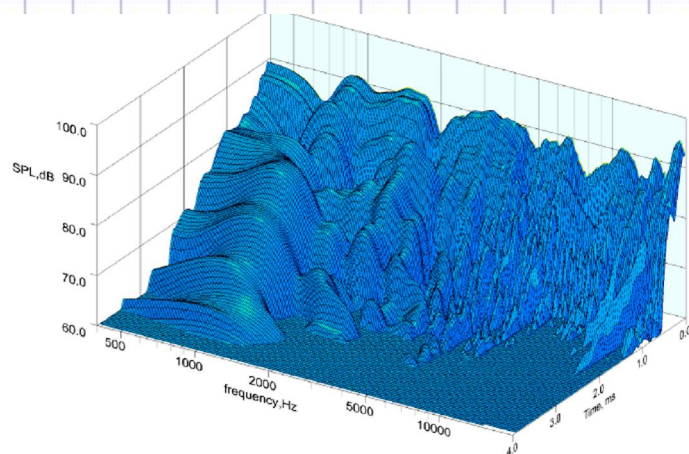
Ground spikes or tree mounts are also available separately. 12" spike model# AT.STAKE.12, 18" spike model# AT.STAKE.18, tree or wall mount model# AT.42/62.MOUNT.

System Type	6 inch Coaxial Tweeter Landscape Satellite
Frequency Range	70-20kHz
Recommended Crossover Frequency	80Hz High-pass - 24dB/octave
Power Rating (continuous/program/peak)	70V/100W transformer 4ohm (100W/200W/400W)
Sensitivity (2.83V @ 1m)	90dB(70V)/89dB(4ohm)
Max SPL	109(70V)/109dB(4ohm)
Nominal Impedance	70V or 4ohm
Low Frequency Driver	6 (162mm) James Loudspeaker Aluminum cone proprietary high excursion Woofer
High Frequency Driver	1 (25mm) James Loudspeaker Aluminum dome coaxial tweeter
Input Connectors	Pigtail wire
Mounting	Aluminum bracket or ground spike
Dimensions (HxWxD)	(7x7x14) in (178x178x356) mm
Net Weight	16lbs/7.3kg(70V) 10lbs/4.6kg(4ohm)
Enclosure Material	Extruded aluminum
Severe Marine Powder Coat Enclosure Finishes	Black Bronze Verde, Weathered Iron (or custom color preference)

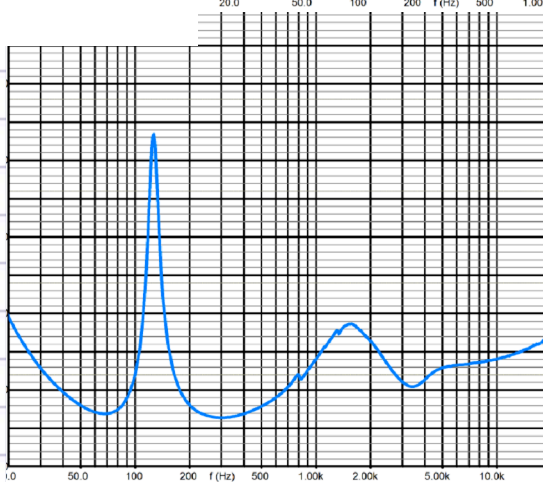
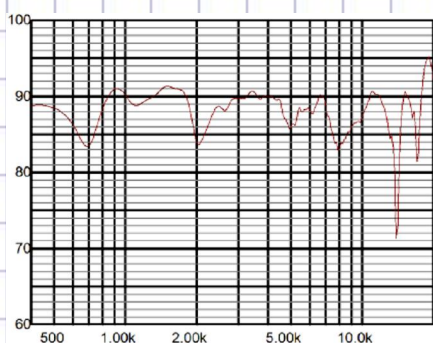


# 62AT-70/4

## 6 with Coaxial Tweeter Landscape Satellite



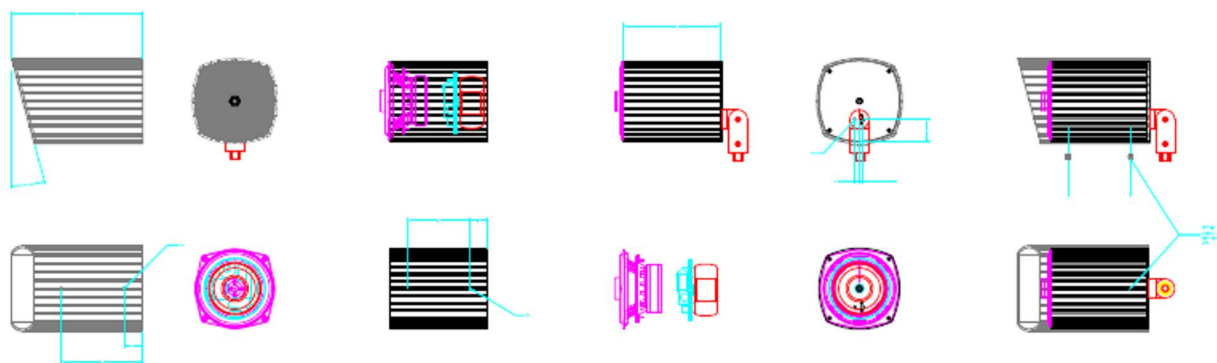
Waterfall  
Graph 70 Volt



SPL-Response  
70 Volt

Impedance  
70 Volt

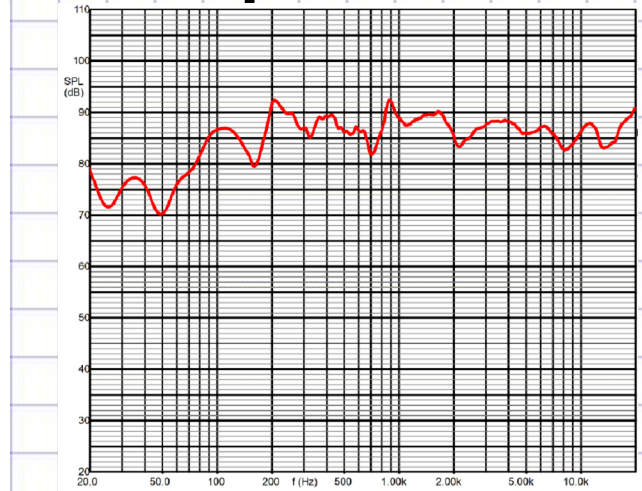
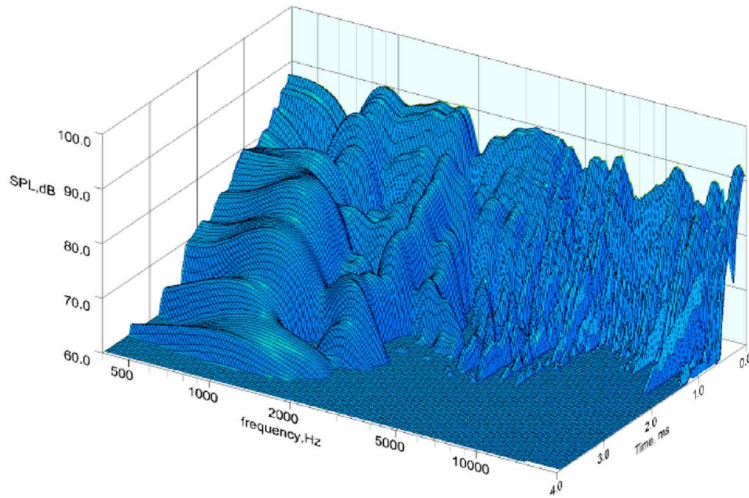
Drawing of 62AT-70



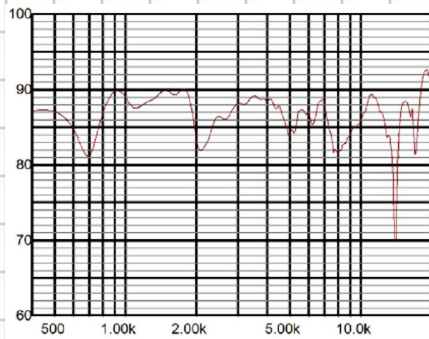


# 62AT-70/4

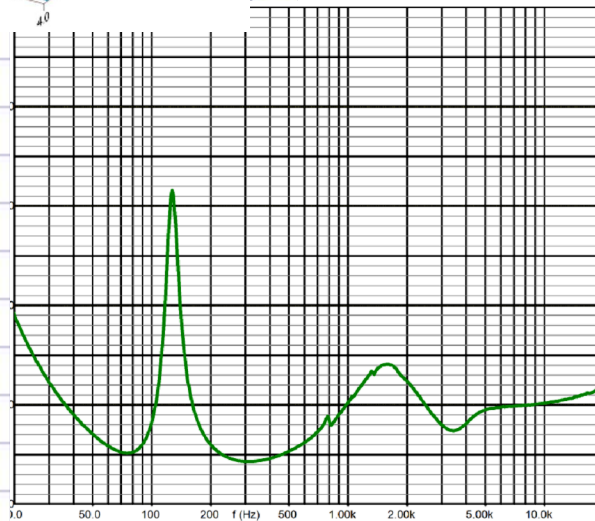
## 6 with Coaxial Tweeter Landscape Satellite



Waterfall  
Graph 4 ohm



Drawing of 62AT-4



SPL-Response  
4 ohm

Impedance  
4 ohm

